

Cardiac Computed Tomographic Angiography: Clinical Applications

Haliah Z. Al Shehri¹, Yahya S. Al Hebaishi² and Abdulrahman M. Al Moghairi^{2*}

¹Adult Cardiology Department, Prince Salman Heart Center, King Fahad Medical City, Riyadh, Saudi Arabia.

²Adult Cardiology Department, Prince Sultan Cardiac Centre (PSCC), Prince Sultan Military Medical City, Riyadh, Saudi Arabia.

Authors' contributions

This work was carried out in collaboration between all both authors. The authors proposed the article format, reviewed the literature and wrote the first draft of the manuscript. The team joined again to make the second review and link the information together and select the appropriate figures and tables in the related sections. All both authors read and approved the final manuscript.

Article Information

DOI: 10.9734/CA/2015/13582

Editor(s):

(1) Anonymous.

Reviewers:

(1) Alexander E Berezin, Internal medicine Department, State Medical University, Zaporozhye, Ukraine.

(2) Anonymous, Fanfani Clinical Research Institute, Italy.

(3) Mojtaba Jafari Tadi, Department of clinical physiology and nuclear medicine, University of Turku, Finland.
Complete Peer review History: <http://www.sciencedomain.org/review-history.php?iid=841&id=26&aid=6904>

Review Article

Received 24th August 2014
Accepted 10th October 2014
Published 13th November 2014

ABSTRACT

Cardiovascular disease is the leading cause of morbidity and mortality worldwide. Cardiac imaging plays an important role in diagnosis and risk stratification of various cardiac diseases. Cardiac computed tomography added a major diagnostic value and led to reducing the need for invasive cardiac measures in many cardiac conditions. Cardiac computed tomography has emerged as an accurate anatomic method for detection of coronary artery disease. The negative predictive value to exclude significant coronary artery stenosis approaches 100%. Advances in multidetector computed tomography technology improved coronary arteries imaging during a single breath hold in a wide range of coronary pathologies. Appropriate patient preparation, image acquisition, and post processing techniques to detect coronary artery stenosis and plaque are prerequisites to achieving diagnostic image quality. Cardiac computed tomography applications also include assessment of cardiac structure and function, post myocardial infarction complications, electro anatomical mapping, and delineation of the pericardium.

*Corresponding author: E-mail: aalmoghairi@pscc.med.sa, Almoghairi@gmail.com;

Keywords: Coronary CT angiography; coronary MDCT; coronary artery stenosis; coronary heart disease.

1. INTRODUCTION

Cardiac computed tomography (CCT) has been increasingly used in the diagnosis of coronary artery disease (CAD) due to significant technological developments that led to improved spatial and temporal resolution [1]. High diagnostic accuracy has been achieved with multidetector computed tomography (MDCT) scanners (64 slice and higher). Furthermore, coronary CT angiography (CCTA) is considered as a reliable alternative to invasive coronary angiography [2-21]. Image quality must be ensured through multiple steps, including patient preparation, the actual protocol, and the synchronization of raw image data with electrocardiography (ECG) (Table 1). Additionally, some attention must be given to the potential risks associated with the ionizing radiation received during CT examinations. Various methods for reducing radiation dose have been implemented [22-25].

Table 1. Recommendations for patients undergoing computed tomography coronary angiography

• In sinus rhythm
• Heart rate <65 beats per minute
• Able to take B-blockers or alternative medication
• Able to hold breath for 10 seconds.
• Normal renal function
• No history of contrast allergy
• Able to hold arms above head during scan
• Sublingual nitroglycerin for coronary vasodilatation

2. CORONARY CT ANGIOGRAPHY

In the current American College of Cardiology Foundation appropriateness criteria guidelines for cardiac CT and (magnetic resonance) MR, CCTA is deemed to be appropriate in the evaluation of intermediate risk patients presented with chest pain whose ECG cannot be interpreted or who are unable to exercise. Although noncontrast-enhanced CT can detect calcific coronary atherosclerosis in its early stages, it cannot accurately predict coronary stenosis. On the other hand, contrast-enhanced CTA can detect subclinical atherosclerosis and coronary stenosis and this has proven to be of

diagnostic and prognostic value, incremental to traditional risk stratification methods.

2.1 Diagnostic Value of Coronary CT Angiography in Coronary Artery Disease

Coronary artery calcification (CAC) detected by non-contrast enhanced CT is pathognomonic for atherosclerosis [26-28] (Fig. 1). The original calcium score developed by Agatston et al. [29]. Standardized categories for the calcium score have been developed with scores of 1–10 considered minimal, 11–100 mild, 101–400 moderate, and >400 severe. While the presence of CAC is nearly 100% specific for atherosclerosis, it is not specific for obstructive disease since both obstructive and nonobstructive lesions have calcification [30-32] (Fig. 2). However the likelihood of significant coronary stenosis increases with the total CAC score [33,34]. CAC alone is not justified in the symptomatic population since noncalcified plaques and even obstructive disease may present in many young adults [35]. CCTA should perform in symptomatic patients even with 0 CAC (Fig. 3).

Clinical applications of CCTA depend mainly on its accuracy for detection of significant coronary artery stenosis. Numerous studies have evaluated the accuracy of CCTA for stenosis detection in comparison to invasive coronary angiography [2-21] (Fig. 3). The sensitivity for the detection of coronary artery stenosis has ranged from 86 to 100% and specificity has been reported between 91 and 98%. Several trials have demonstrated that high heart rates and extensive coronary calcification negatively influence accuracy [19-21,36-38]. Meijboom et al. correlate the diagnostic accuracy of CCTA to the clinical presentation and pretest likelihood of coronary artery disease [39]. It was demonstrated that the diagnostic value of CCTA was highest in patients with a relatively low pretest likelihood of disease and lowest in patients with a high likelihood of disease based on the clinical presentation.

The “ACCURACY” trial studied 230 patients with suspected CAD [37]. Prevalence of disease was 25%, and per patient sensitivity and specificity for detecting individuals with at least one stenosis ≥ 50% were 95 and 83%. In addition to that the negative predictive value was 99%.

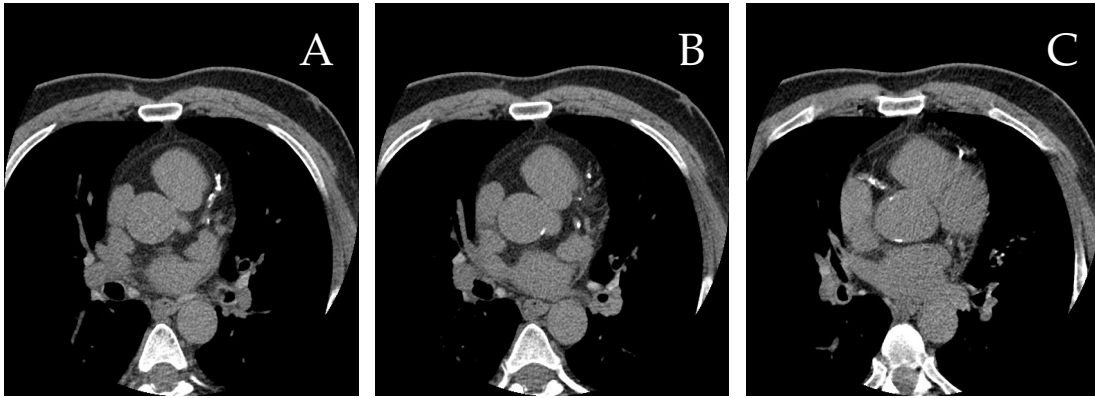


Fig. 1. A non contract-enhanced cardiac CT revealed significant calcifications in all coronary arteries and the ascending aorta

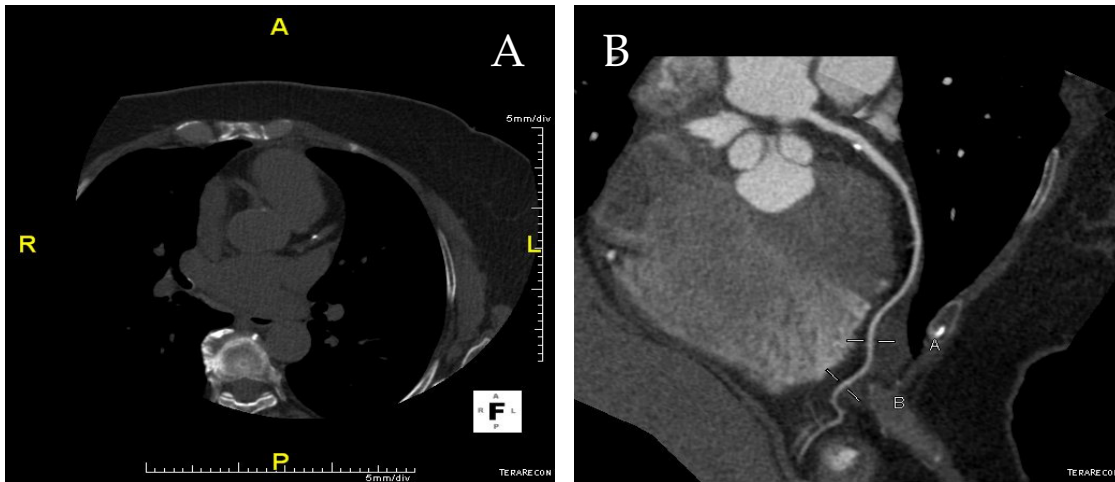


Fig. 2. Coronary CT angiography of the left descending coronary artery showing non-obstructive calcified plaque



Fig. 3. A 45-year-old woman with hypertension presents with chest pain. (A) No coronary artery calcification was seen on the non contrast CT. (B) A severe left descending coronary artery stenosis was seen with CT coronary angiography (arrow). (C) Stenosis confirmed with invasive coronary angiography (arrow)

Several observational trials have demonstrated that symptomatic patients, when high quality CCTA scan was negative, had a very favorable clinical outcome even without further additional testing [40-42]. Another clinical situation in which noninvasive imaging is indicated to rule out coronary stenosis is the setting of acute chest pain particularly if the ECG and cardiac biomarkers were non diagnostic [43]. CTA has been shown to be accurate and safe to stratify patients with acute chest pain and absence of ECG changes as well as cardiac biomarkers elevation [44-48]. In addition to that Triple-rule-out (TRO) CTA can provide a cost-effective evaluation of the coronary arteries, aorta, pulmonary arteries, and adjacent extra cardiac structures for the patient with acute chest pain. It is most appropriate for the patient who is judged to be at low to intermediate risk for acute coronary syndrome (ACS) and whose symptoms may also be attributed to acute pathologic conditions of the aorta or pulmonary arteries. CCTA has emerged as the standard of reference for identification and characterization of coronary artery anomalies [49] (Table 2). CCTA offers superior definition of the ostial origin and proximal path of the anomalous coronary artery compared with conventional angiography [50-56] (Fig. 4).

Table 2. Classification of coronary artery anomalies

Anomalies of origin
High takeoff
Multiple ostia
Single coronary artery
Anomalous origin of coronary artery from pulmonary artery (ALCAPA) Origin of coronary artery or branch from opposite noncoronary sinus and an anomalous (retroaortic, interarterial, prepulmonic, septal) course
Anomalies of course
Myocardial bridging
Duplication of arteries
Anomalies of termination
Coronary artery fistula
Coronary arcade
Extracardiac termination

Greenberg MA, Fish BG, Spindola-Franco H: Congenital anomalies of the coronary arteries. Classification and significance. Radiologic clinics of North America 1989, 27(6): 1127-1146.

2.2 Prognostic Value of CCTA in Coronary Artery Disease

CAC is superior to conventional risk factors in predicting outcomes [57,58]. Use of noncontract CT for calcium scoring was rated as appropriate within intermediate- and selected low-risk patients according to American College of Cardiology Foundation appropriateness criteria guidelines for cardiac CT and MR for risk stratification and primary prevention in a symptomatic individuals [43]. The prognostic value of extensive CAC was demonstrated in a meta-analysis of 3,924 symptomatic patients with a 3.5 year follow-up, the cardiac event rate was 2.6% per year in those with CAC > 0 and 0.5% per year in 0 CAC patients [59].

Recent data suggest that CCTA had incremental prognostic value over traditional risk factors [60]. Prognosis is predicted by coronary anatomy such as left main stenosis $\geq 50\%$, 3 vessel disease and 2-vessel disease including proximal LAD. The absence of CAD on CCTA conveys an excellent prognosis for symptomatic patients being evaluated for suspected CAD. Werkhoven et al. demonstrated that in patients with suspected CAD and intermediate pretest likelihood, CTA could efficiently make a distinction between patients at low or at high risk for future events [61]. Recently, Chow et al. verified that incremental prognostic value of CCTA could be achieved by the addition of the left ventricular ejection fraction (LVEF) and the total plaque score to CAD severity as determined by CCTA [62].

2.3 Coronary CT Angiography after Revascularization

2.3.1 Bypass grafts

CCTA is increasingly used as a noninvasive modality for the assessment of bypass graft patency and stenosis. Grafts and the anastomosis region of venous and arterial grafts can be analyzed with increased diagnostic yield [63-71] (Fig. 5). Recently published studies have demonstrated a negative predictive value for ruling out high-grade bypass graft stenosis ranging between 96 and 99% [70,71]. However, the distal anastomosis can still be challenging and the degree of stenosis tends to be overestimated [70] (Fig. 6). Additionally the native coronary circulation can be assessed with high diagnostic yield despite previous bypass surgery [71].

2.3.2 Coronary stents

The vast majority of coronary interventions are performed in association with placement of a coronary stent. Most coronary stents are made of stainless steel. Coronary stents usually measure 2.5–4 mm in diameter and are constantly subjected to cardiac motion. Nearly all coronary stents are made of metal and produce typical blooming (“thickening”) of the stent struts with an apparent reduction of the visible stent lumen [72].

Detailed analysis of the inner-stent lumen is essential to detect intimal hyperplasia, which is the major mechanism of in-stent restenosis (Fig. 7). Complete stent occlusion could be reliably detected, while high-grade and even subtotal stenosis is frequently not identified. This can be explained by the observation that even vessels with subtotal stenosis often show unimpeded contrast flow or due to retrograde filling via collaterals.

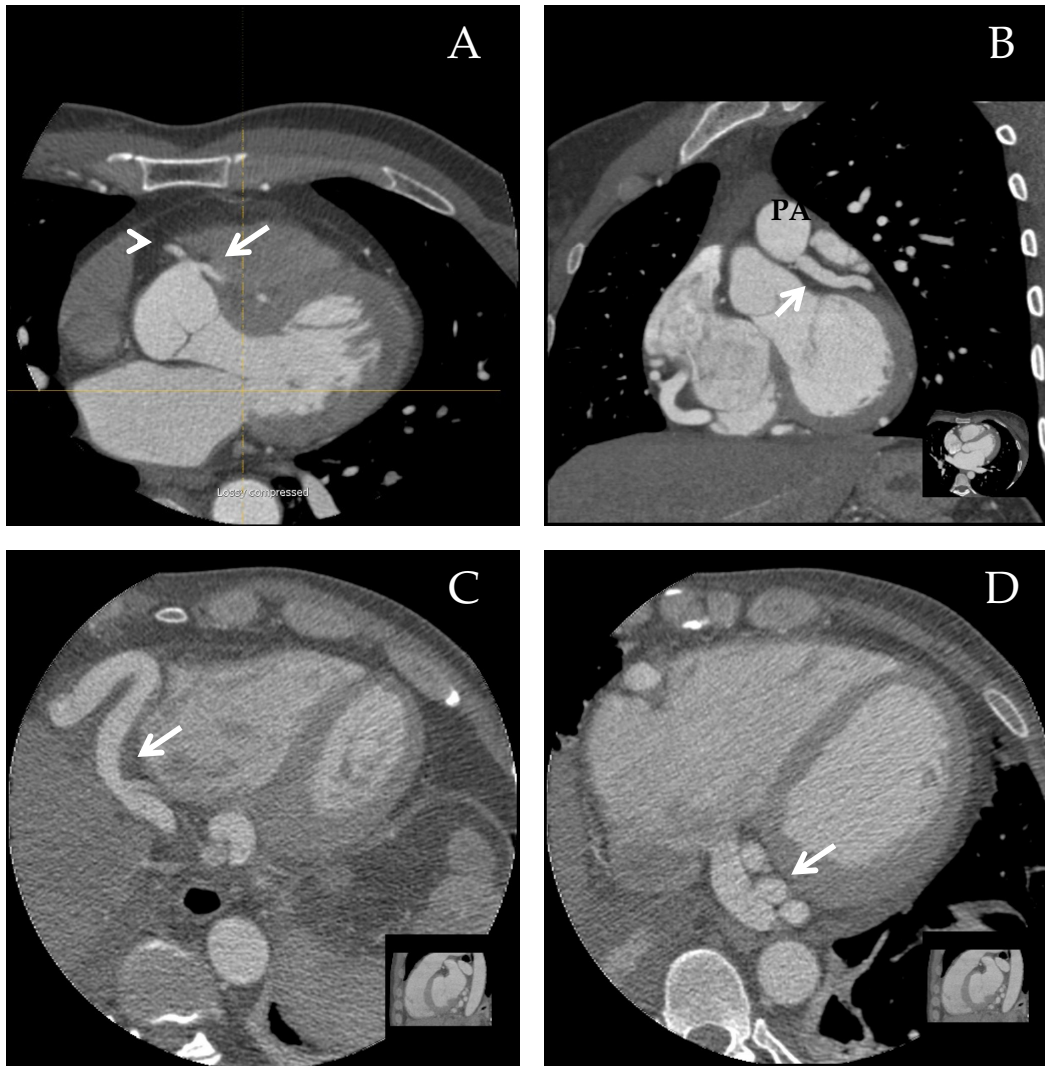


Fig. 4. Coronary artery anomalies. (A) Axial CT image shows a transseptal left descending artery (arrow) that arises from the right coronary artery (arrowhead). (B) Left coronary artery (arrow) arises from pulmonary artery (ALCAPA). Coronary artery fistula in a 44-year-old woman with palpitations (C) CT images show a tortuous and dilated right coronary artery (arrows) terminates into coronary sinus (D)

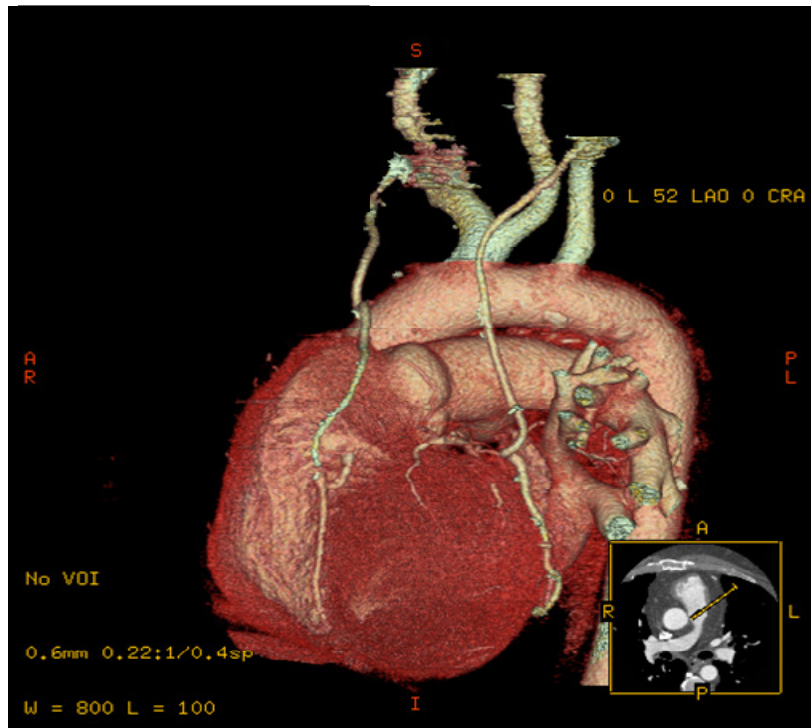


Fig. 5. 64-row MDCT 3D image reconstruction shows two patent arterial grafts coursing to the left anterior descending coronary artery and an obtuse marginal branch

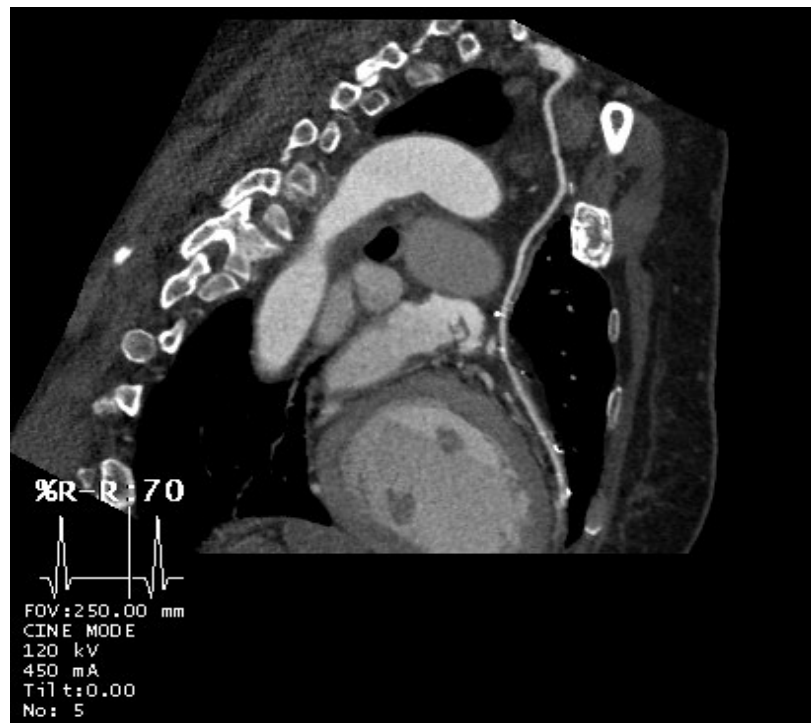


Fig. 6. 64-row MDCT 3D image shows a patent left internal mammary graft to the left anterior descending coronary artery

Recently, two meta-analyses of 16- and 64-row MDCT studies of coronary stents have been published regarding the diagnostic efficiency after stent implantation [73,74]. Overall sensitivity was 91%, specificity was 91% with a positive predictive value of 68%, and a negative predictive value of 98% [74]. Stent material, strut thickness and stent diameter are important factors influencing the ability to achieve diagnostic images. In fact, stents with a diameter ≥ 4.0 mm can be evaluated with fairly good diagnostic accuracy [75]. The thinner the struts of the usual metal stents are, the fewer artifacts hamper image quality.

2.4 Is Clinical Utility of Cardiovascular CT Limited to CAD?

CCT clinical utility is not limited to the assessment of coronary vasculature, but can yield information about other causes of chest pain such as aortic dissection, or pulmonary embolism. Other applications include assessment of cardiac structure and function, post myocardial infarction complications, and delineation of the pericardium. CT angiography is a useful modality in imaging the aorta and peripheral arterial tree. Furthermore, cardiac CTA became standard of care in pre procedural assessment of trans catheter aortic valve implantation and atrial fibrillation ablation procedures. In addition to that non-contrast studies allow for accurate quantification of coronary calcification, which provides important prognostic information.

2.5 Cardiac CT Angiography Assessment for Cardiac Pathology

Retrospective ECG-gating protocols can provide quantitative data on global and regional left ventricle (LV) and right ventricle (RV) systolic function with excellent correlation to echocardiography and CMRI [76,77]. It can also assess myocardial thickness, cardiac chamber sizes and volumes. Reproducibility of CT in performing right and left ventricular volume and function measurements has been established [78,79]. Further, CCT can effectively evaluate various myocardial diseases, including post myocardial infarction complications (Fig. 8) and other cardiomyopathies [80-82] (Fig. 9). CCT is extremely sensitive to the detection of pericardial thickening and calcification, a finding that can be associated with constrictive pericarditis [83,84]

(Fig. 10). Additional applications include assessment of intracardiac shunts, masses, and congenital defects [85-87] (Fig. 11). CCT has a limited role for the evaluation of valvular heart disease (VHD) but CCTA for preoperative evaluation in VHD is increasingly used, and high accuracy for the detection of significant coronary stenosis has been reported [88-90].

3. MYOCARDIAL VIABILITY

The ability to distinguish dysfunctional but viable myocardium from nonviable tissue after acute or chronic ischemia is a potentially important component in the evaluation of patients with CAD and LV dysfunction. Patients with viable myocardium have excellent prognosis after revascularization [91]. Fluorine-18 (fluoro-deoxy-glucose) FDG (positron emission tomography) PET in conjunction with resting perfusion images (N-13 ammonia, rubidium-82 or (single-photon emission computed tomography) SPECT using technetium-99m agents) is one of the established and accurate metabolic imaging techniques used for myocardial viability assessment [92]. The assessment of myocardial viability and infarct morphology with delayed contrast-enhanced MRI has been well validated over the past several years [93]. The recent advent of MDCT technology has expanded its potential for a more comprehensive evaluation of cardiovascular diseases. Delayed MDCT myocardial imaging can accurately identify and characterize morphological features of acute and healed myocardial infarction, including infarct size, transmural, and the presence of micro vascular obstruction and scar [94,95]. Well-delineated hyper enhanced regions characterize infarcted myocardial tissue by prospective ECG-gated MDCT at lower radiation dose and good resolution [96], whereas regions of micro vascular obstruction by MDCT are characterized by hypo-enhancement on imaging early after MI [94,95]. The mechanism of myocardial hyper-enhancement and hypo-enhancement in acutely injured myocardial territories after iodinated contrast administration is similar to that proposed for delayed gadolinium-enhanced MRI [97]. The better spatial resolution of MDCT as compared to (cardiac magnetic resonance image) CMRI may influence the accuracy of viability assessment, but no study so far has tested this hypothesis.

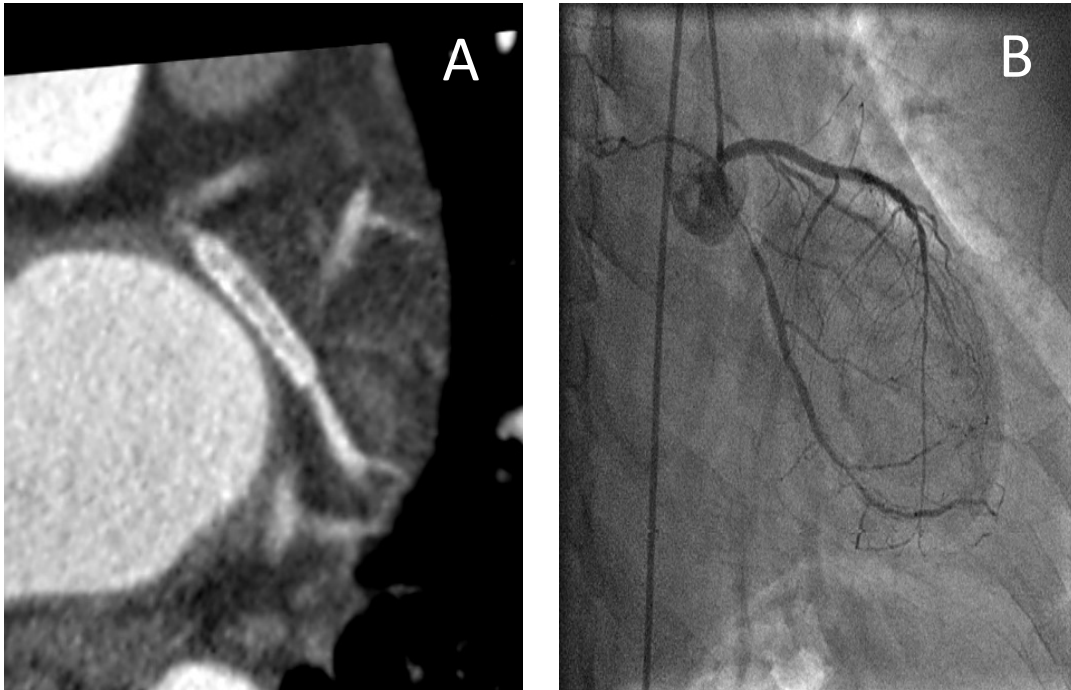


Fig. 7. In-stent stenosis proximal and distal left circumflex coronary artery. (A) 64-row MDCT. (B) Invasive coronary angiography

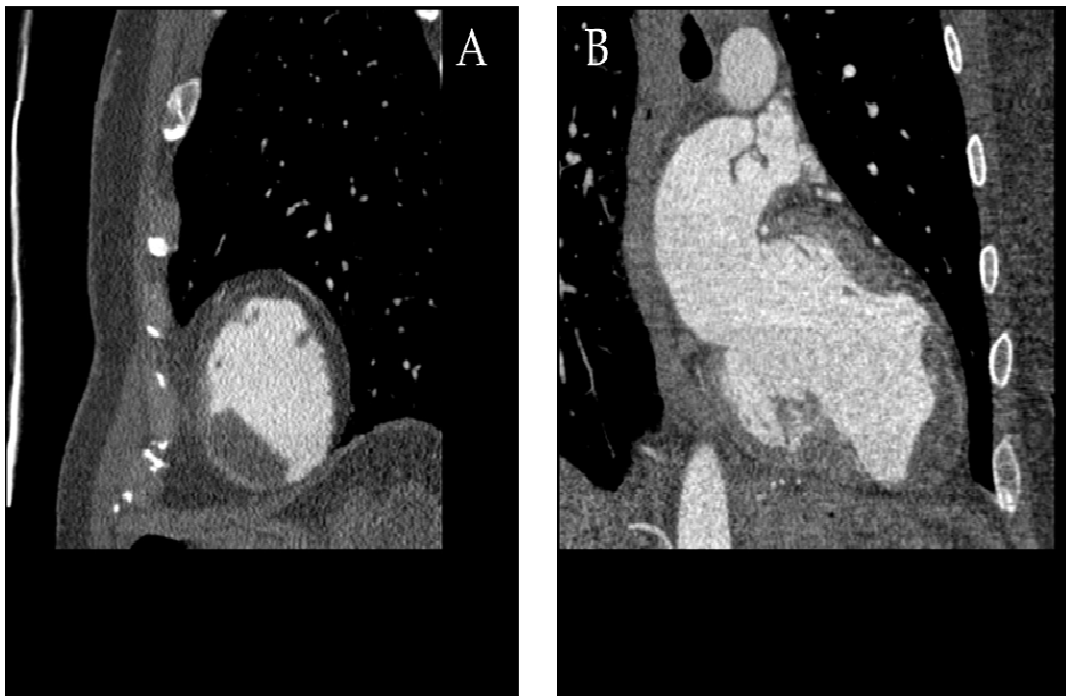


Fig. 8. Fortyfive-year-old woman with a recent myocardial infarction. Short axis (A) and two-chamber (B) views show a left ventricular apical aneurysm with thrombus

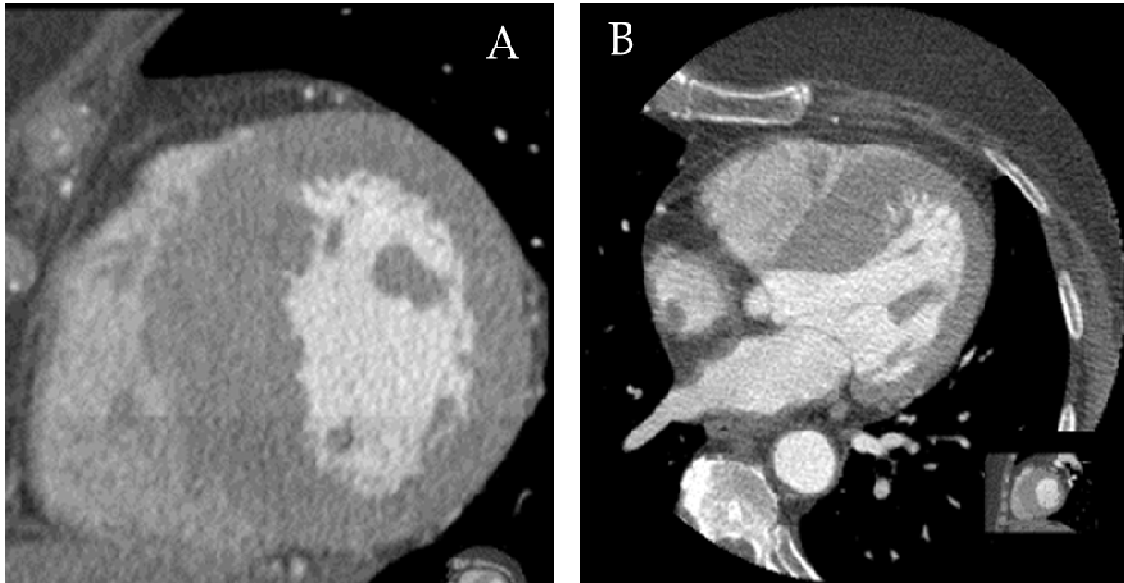


Fig. 9. Short axis and five-chamber view demonstrates abnormal thickening of the mid-and basal interventricular septum. The most common form of hypertrophic cardiomyopathy with or without obstruction

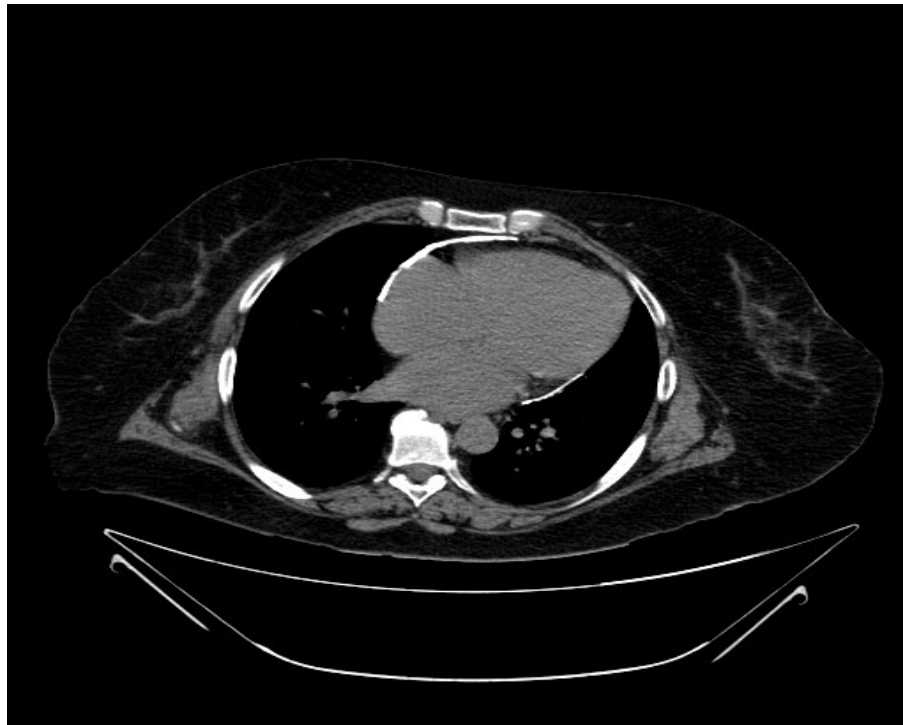


Fig. 10. Non-enhanced contrast CT demonstrates concentric, densely calcified pericardium in a patient with constrictive pericarditis

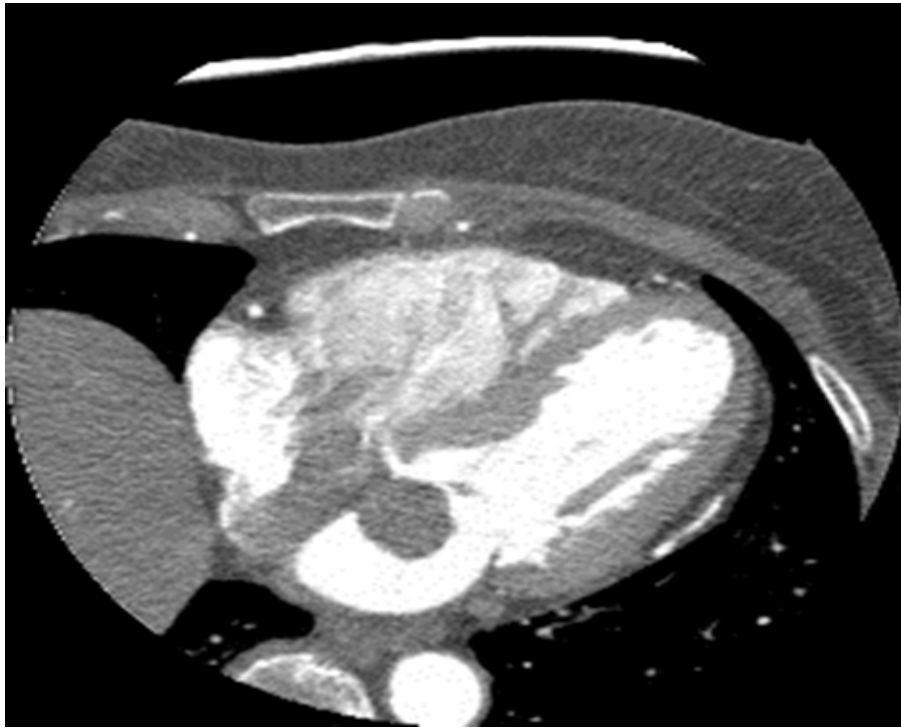


Fig. 11. Fifty two-year-old male with a left atrial mass. The post contrast study shows non-enhancement of the pedunculated mass arises from the region of the fossa ovalis, consistent with left atrial myxoma

4. ISCHEMIA DETECTION

The combination of coronary angiogram with stress-induced myocardial perfusion assessment had to wait until spiral CT technology progressed sufficiently to enable the acquisition of 64 slices simultaneously [98]. Current generation 64-detector scanners still have limited coverage of the heart, resulting in the base of the heart being scanned earlier in time than the apex, making comparisons in signal intensities between the two areas problematic. The greatest limitations to CCTA are the presence of severely calcified coronary segments, stents, or other artifacts that limit luminal visualization. The possibility of quantifying epicardial coronary plaque while also assessing microvascular disease during maximal vasodilatation enables coronary MDCTA to characterize macrovascular atherosclerosis as well as microvascular dysfunction.

5. ELECTROPHYSIOLOGICAL MAPPING AND RADIOFREQUENCY CATHETER ABLATION

Atrial fibrillation ablation requires a detailed understanding of cardiovascular anatomy

through 3-D characterization of the relationships between the left atrium, the adjacent cardiac structures, and extra-cardiac structures [99] (Fig. 12). Cardiac CT study serves as a preprocedure roadmap for procedural planning, a 3-D data set for intraprocedure electro anatomic mapping and ablation. CTA characterization of the left atrium and pulmonary veins is achieved through multiple modalities of evaluation including multiplane 2-D views, 3-D volumetric reconstructions, virtual endocardial views, and volumetric quantification of the atria. Workstation software can be used for assessment of pulmonary veins anatomy and ostial diameter. Additionally, atrial anatomy, left atrial appendage thrombus and the relationship of the esophagus and aorta to the posterior left atrium and pulmonary veins can be defined [99,100]. Electro anatomic mapping with CCTA image integration has revolutionized catheter-based therapies by allowing for electrical mapping and ablation to occur on a 3 D map of the patient's individual endocardial left atrial anatomy.

6. LIMITATIONS and CHALLENGES

High-quality images are the most important requirement for the diagnostic assessment of CCTA. Image quality must be ensured through multiple steps, including patient preparation, the actual CCTA scan protocol, and the synchronization of raw image data with ECG information. Motion artifacts occur in patients with high heart rates, heart rate variability, and the presence of irregular or ectopic heart beats such as premature ventricular contractions (PVCs) contribute to the degradation of image quality (Fig. 13). Multiple studies have demonstrated that the highest image quality of CCTA can be achieved at low heart rates (<65 beats per minute) [101-103]. Adequate patient preparation with medication (e.g. B-blocker) to reduce the heart rate as well as training of the breath-hold commands is mandatory to avoid cardiac and respiratory artifacts. High-attenuation structures, such as

calcified plaques or stents may degrade the accuracy of the assessment of stenosis due to beam-hardening artifacts. Several meta-analyses demonstrated high-density calcification produces blooming artifacts, which lead to overestimation of the degree of coronary stenosis [104-106]. The specificity of CCTA is reduced in the presence of coronary artery calcium if the Agatston score is >400 [19-37]. The radiation dose associated with CT imaging is a serious concern for both clinicians and manufacturers [22,23]. With increasing application of CCTA in the diagnosis of CAD, the research focus has shifted from the previous emphasis on diagnostic accuracy to the current focus on reduction of radiation dose with acceptable diagnostic images [24,25]. Tremendous progress has been made to reduce the radiation dose by using many of the technologies and strategies however; much effort is still necessary to ensure that CCTA is safely performed in imaging patients with suspected coronary artery disease.

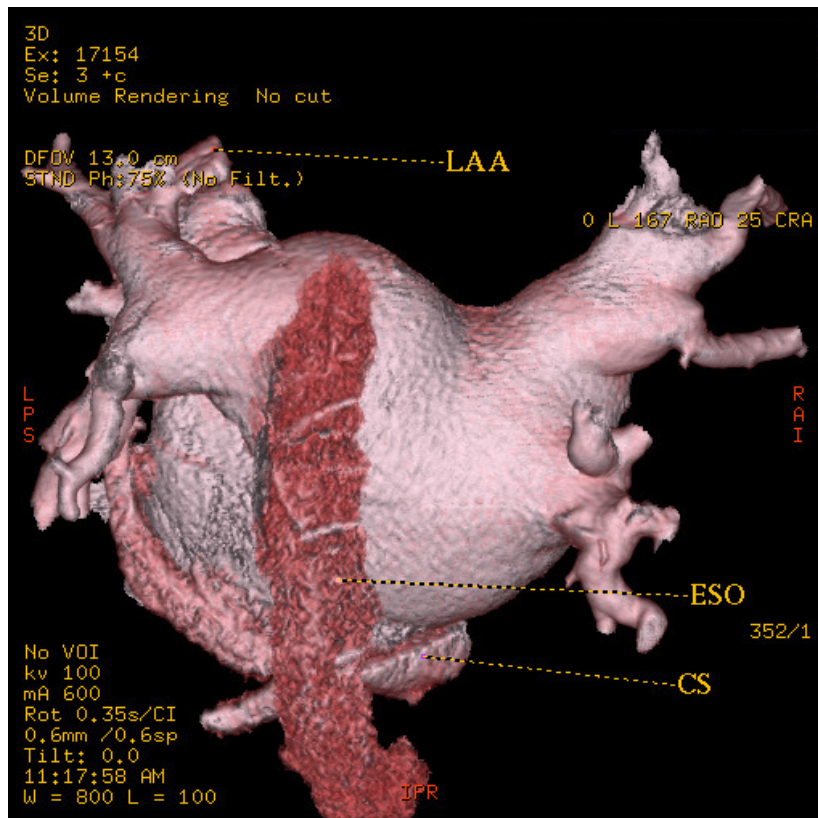


Fig. 12. D reconstructions demonstrating the relationship of coronary sinus (CS) and esophagus (ESO) to the posterior left atrium and left lower pulmonary vein



Fig. 13. (A) Patient imaged at heart rate of 77 beats per minute. Axial image at level of mid right coronary artery demonstrates typical appearance of motion artifact (arrow). (B) Patient with multiple extra systolic beats during image acquisition. Stair-step artifacts (arrows) are caused by irregular rhythm

7. CONCLUSION

CCT/CCTA is a well-established cardiac diagnostic modality, which can be used, in various cardiovascular conditions. Major advantages of CCT/CCTA include reliability, safety and the fact it provides both anatomical and functional information. The reduction of radiation dose with acceptable diagnostic image quality is the focus of current and future research.

CONSENT

Not applicable.

ETHICAL APPROVAL

Not applicable.

COMPETING INTERESTS

Authors have declared that no competing interests exist.

REFERENCES

1. Hurlock GS, Higashino H, Mochizuki T. History of cardiac computed tomography: single to 320-detector row multislice computed tomography. *The*

- international Journal of Cardiovascular Imaging. 2009;1:3-42(25 Suppl).
2. Lim MC, Wong TW, Yaneza LO, De Larrazabal C, Lau JK, Boey HK. Non-invasive detection of significant coronary artery disease with multi-section computed tomography angiography in patients with suspected coronary artery disease. *Clinical Radiology*. 2006;61(2):174-180.
3. Halon DA, Gaspar T, Adawi S, Rubinshtein R, Schliamser JE, Peled N, Lewis BS. Uses and limitations of 40 slice multi-detector row spiral computed tomography for diagnosing coronary lesions in unselected patients referred for routine invasive coronary angiography. *Cardiology*. 2007;108(3):200-209.
4. Watkins MW, Hesse B, Green CE, Greenberg NL, Manning M, Chaudhry E, Dauerman HL, Garcia MJ. Detection of coronary artery stenosis using 40-channel computed tomography with multi-segment reconstruction. *The American Journal of Cardiology*. 2007;99(2):175-181.
5. Grosse C, Globits S, Hergan K. Forty-slice spiral computed tomography of the coronary arteries: assessment of image quality and diagnostic accuracy in a non-selected patient population. *Acta Radiologica*. 2007;48(1):36-44.

6. Ropers D, Rixe J, Anders K, Kuttner A, Baum U, Bautz W, Daniel WG, Achenbach S. Usefulness of multidetector row spiral computed tomography with 64- x 0.6-mm collimation and 330-ms rotation for the noninvasive detection of significant coronary artery stenoses. *The American Journal of Cardiology.* 2006;97(3):343-348.
7. Fine JJ, Hopkins CB, Ruff N, Newton FC. Comparison of accuracy of 64-slice cardiovascular computed tomography with coronary angiography in patients with suspected coronary artery disease. *The American Journal of Cardiology.* 2006;97(2):173-174.
8. Nikolaou K, Knez A, Rist C, Wintersperger BJ, Leber A, Johnson T, Reiser MF, Becker CR. Accuracy of 64-MDCT in the diagnosis of ischemic heart disease. *AJR American Journal of Roentgenology.* 2006;187(1):111-117.
9. Schlosser T, Mohrs OK, Magedanz A, Nowak B, Voigtlander T, Barkhausen J, Schmermund A. Noninvasive coronary angiography using 64-detector-row computed tomography in patients with a low to moderate pretest probability of significant coronary artery disease. *Acta Radiologica.* 2007;48(3):300-307.
10. Muhlenbruch G, Seyfarth T, Soo CS, Pregalathan N, Mahnken AH. Diagnostic value of 64-slice multi-detector row cardiac CTA in symptomatic patients. *European Radiology.* 2007;17(3):603-609.
11. Meijboom WB, Mollet NR, Van Mieghem CA, Weustink AC, Pugliese F, van Pelt N, Cademartiri F, Vourvouri E, de Jaegere P, Krestin GP et al., 64-Slice CT coronary angiography in patients with non-ST elevation acute coronary syndrome heart. 2007;93(11):1386-1392.
12. Herzog C, Zwerner PL, Doll JR, Nielsen CD, Nguyen SA, Savino G, Vogl TJ, Costello P, Schoepf UJ. Significant coronary artery stenosis: comparison on per-patient and per-vessel or per-segment basis at 64-section CT angiography. *Radiology.* 2007;244(1):112-120.
13. Ehara M, Surmely JF, Kawai M, Katoh O, Matsubara T, Terashima M, Tsuchikane E, Kinoshita Y, Suzuki T, Ito T et al., Diagnostic accuracy of 64-slice computed tomography for detecting angiographically significant coronary artery stenosis in an unselected consecutive patient population: comparison with conventional invasive angiography. *Circulation Journal: official Journal of The Japanese Circulation Society.* 2006;70(5):564-571.
14. Hausleiter J, Meyer T, Hadamitzky M, Zankl M, Gerein P, Dorrlor K, Kastrati A, Martinoff S, Schomig A: non-invasive coronary computed tomographic angiography for patients with suspected coronary artery disease: the Coronary Angiography by Computed Tomography with the Use of a Submillimeter resolution (CACTUS) trial. *European Heart Journal.* 2007;28(24):3034-3041.
15. Shabestari AA, Abdi S, Akhlaghpour S, Azadi M, Baharjoo H, Pajouh MD, Emami Z, Esfahani F, Firouzi I, Hashemian M et al. Diagnostic performance of 64-channel multislice computed tomography in assessment of significant coronary artery disease in symptomatic subjects. *The American Journal Of Cardiology.* 2007;99(12):1656-1661.
16. Scheffel H, Alkadhi H, Plass A, Vachenaer R, Desbiolles L, Gaemperli O, Schepis T, Frauenfelder T, Schertler T, Husmann L et al. Accuracy of dual-source CT coronary angiography: First experience in a high pre-test probability population without heart rate control. *European Radiology.* 2006;16(12):2739-2747.
17. Heuschmid M, Burgstahler C, Reimann A, Brodoefel H, Mysal I, Haeberle E, Tsiflikas I, Claussen CD, Kopp AF. Schroeder S: Usefulness of noninvasive cardiac imaging using dual-source computed tomography in an unselected population with high prevalence of coronary artery disease. *The American Journal Of Cardiology.* 2007;100(4):587-592.
18. Ropers U, Ropers D, Pfloderer T, Anders K, Kuettner A, Stilianakis NI, Komatsu S, Kalender W, Bautz W, Daniel WG et al. Influence of heart rate on the diagnostic accuracy of dual-source computed tomography coronary angiography. *Journal Of The American College Of Cardiology.* 2007;50(25):2393-2398.
19. Leber AW, Johnson T, Becker A, von Ziegler F, Tittus J, Nikolaou K, Reiser M, Steinbeck G, Becker CR, Knez A. Diagnostic accuracy of dual-source multi-slice CT-coronary angiography in patients with an intermediate pretest likelihood for coronary artery disease. *European Heart Journal.* 2007;28(19):2354-2360.
20. Weustink AC, Meijboom WB, Mollet NR, Otsuka M, Pugliese F, van Mieghem C, Malago R, van Pelt N, Dijkshoorn ML,

- Cademartiri F, et al. Reliable high-speed coronary computed tomography in symptomatic patients. *Journal of The American College of Cardiology*. 2007;50(8):786-794.
21. Alkadhi H, Scheffel H, Desbiolles L, Gaemperli O, Stolzmann P, Plass A, Goerres GW, Luescher TF, Genoni M, Marincek B et al. Dual-source computed tomography coronary angiography: influence of obesity, calcium load, and heart rate on diagnostic accuracy. *European Heart Journal*. 2008;29(6):766-776.
 22. Brenner DJ, Hall EJ. Computed tomography--an increasing source of radiation exposure. *The New England Journal of Medicine*. 2007;357(22):2277-2284.
 23. Hausleiter J, Meyer T, Hermann F, Hadamitzky M, Krebs M, Gerber TC, McCollough C, Martinoff S, Kastrati A, Schomig A et al. Estimated radiation dose associated with cardiac CT angiography. *Journal of the American Medical Association*. 2009;301(5):500-507.
 24. Paul JF, Abada HT. Strategies for reduction of radiation dose in cardiac multislice CT. *European Radiology*. 2007;17(8):2028-2037.
 25. Sun Z, Ng KH. Multislice CT angiography in cardiac imaging. Part III: radiation risk and dose reduction. *Singapore Medical Journal*. 2010;51(5):374-380.
 26. Blankenhorn DH, Stern D. Calcification of the coronary arteries. *The American Journal of Roentgenology, Radium Therapy, and Nuclear Medicine*. 1959;81(5):772-777.
 27. Frink RJ, Achor RW, Brown AL, Jr., Kincaid OW, Brandenburg RO. Significance of calcification of the coronary arteries. *The American Journal of Cardiology*. 1970;26(3):241-247.
 28. Wexler L, Brundage B, Crouse J, Detrano R, Fuster V, Maddahi J, Rumberger J, Stanford W, White R, Taubert K. Coronary artery calcification: pathophysiology, epidemiology, imaging methods, and clinical implications. A statement for health professionals from the American Heart Association. Writing Group. *Circulation*. 1996;94(5):1175-1192.
 29. Agatston AS, Janowitz WR, Hildner FJ, Zusmer NR, Viamonte M, Jr Detrano R. Quantification of coronary artery calcium using ultrafast computed tomography. *Journal of the American College of Cardiology* 1990;15(4):827-832.
 30. Simons DB, Schwartz RS, Edwards WD, Sheedy PF, Breen JF, Rumberger JA. Noninvasive definition of anatomic coronary artery disease by ultrafast computed tomographic scanning: a quantitative pathologic comparison study. *Journal of The American College Of Cardiology*. 1992;20(5):1118-1126.
 31. Detrano R, Tang W, Kang X, Mahaisavariya P, McCrae M, Garner D, Peng SK, Measham C, Molloy S, Gutfinger D et al. Accurate coronary calcium phosphate mass measurements from electron beam computed tomograms. *American Journal of Cardiac Imaging*. 1995;9(3):167-173.
 32. Mautner GC, Mautner SL, Froehlich J, Feuerstein IM, Proschan MA, Roberts WC, Doppman JL: Coronary artery calcification: assessment with electron beam CT and histomorphometric correlation. *Radiology*. 1994;192(3):619-623.
 33. Budoff MJ, Georgiou D, Brody A, Agatston AS, Kennedy J, Wolfkiel C, Stanford W, Shields P, Lewis RJ, Janowitz WR et al. Ultrafast computed tomography as a diagnostic modality in the detection of coronary artery disease: a multicenter study. *Circulation*. 1996;93(5):898-904.
 34. Guerci AD, Spadaro LA, Popma JJ, Goodman KJ, Brundage BH, Budoff M, Lerner G, Vizza RF: Relation of coronary calcium score by electron beam computed tomography to arteriographic findings in asymptomatic and symptomatic adults. *The American Journal of Cardiology*. 1997;79(2):128-133.
 35. Raggi P, Callister TQ, Cooil B, He ZX, Lippolis NJ, Russo DJ, Zelinger A, Mahmarian JJ: Identification of patients at increased risk of first unheralded acute myocardial infarction by electron-beam computed tomography. *Circulation*. 2000;101(8):850-855.
 36. Ghostine S, Caussin C, Daoud B, Habis M, Perrier E, Pesenti-Rossi D, Sigal-Cinquandre A, Angel CY, Lancelin B, Capderou A et al. Non-invasive detection of coronary artery disease in patients with left bundle branch block using 64-slice computed tomography. *Journal of the American College of Cardiology*. 2006;48(10):1929-1934.
 37. Budoff MJ, Dowe D, Jollis JG, Gitter M, Sutherland J, Halamert E, Scherer M,

- Bellinger R, Martin A, Benton R et al. Diagnostic performance of 64-multidetector row coronary computed tomographic angiography for evaluation of coronary artery stenosis in individuals without known coronary artery disease: results from the prospective multicenter ACCURACY (Assessment by Coronary Computed Tomographic Angiography of Individuals Undergoing Invasive Coronary Angiography) trial. *Journal of the American College of Cardiology*. 2008;52(21):1724-1732.
38. Vanhoenacker PK, Heijenbrok-Kal MH, Van Heste R, Decramer I, Van Hoe LR, Wijns W, Hunink MG: Diagnostic performance of multidetector CT angiography for assessment of coronary artery disease: meta-analysis. *Radiology*. 2007;244(2):419-428.
 39. Meijboom WB, van Mieghem CA, Mollet NR, Pugliese F, Weustink AC, van Pelt N, Cademartiri F, Nieman K, Boersma E, de Jaegere P et al. 64-slice computed tomography coronary angiography in patients with high, intermediate, or low pretest probability of significant coronary artery disease. *Journal of the American College of Cardiology*. 2007;50(15):1469-1475.
 40. Gilard M, Le Gal G, Cornily JC, Vinsonneau U, Joret C, Pennec PY, Mansourati J, Boschat J. Midterm prognosis of patients with suspected coronary artery disease and normal multislice computed tomographic findings: a prospective management outcome study. *Archives of internal medicine*. 2007; 167(15):1686-1689.
 41. Lesser JR, Flygenring B, Knickelbine T, Hara H, Henry J, Kalil A, Pelak K, Lindberg J, Pelzel J, Schwartz RS. Clinical utility of coronary CT angiography: coronary stenosis detection and prognosis in ambulatory patients. *Catheterization and Cardiovascular Interventions : official Journal of the Society for Cardiac Angiography & Interventions*. 2007;69(1):64-72.
 42. Hadamitzky M, Freissmuth B, Meyer T, Hein F, Kastrati A, Martinoff S, Schomig A, Hausleiter J. Prognostic value of coronary computed tomographic angiography for prediction of cardiac events in patients with suspected coronary artery disease. *Jacc Cardiovascular Imaging*. 2009;2(4):404-411.
 43. Hendel RC, Patel MR, Kramer CM, Poon M, Hendel RC, Carr JC, Gerstad NA, Gillam LD, Hodgson JM, Kim RJ et al. ACCF/ACR/SCCT/SCMR/ASNC/NASCI/SCAI/SIR 2006 appropriateness criteria for cardiac computed tomography and cardiac magnetic resonance imaging: a report of the American College of Cardiology Foundation Quality Strategic Directions Committee Appropriateness Criteria Working Group, American College of Radiology, Society of Cardiovascular Computed Tomography, Society for Cardiovascular Magnetic Resonance, American Society of Nuclear Cardiology, North American Society for Cardiac Imaging, Society for Cardiovascular Angiography and Interventions, and Society of Interventional Radiology. *Journal of the American College of Cardiology*. 2006;48(7):1475-1497.
 44. Hoffmann U, Nagurney JT, Moselewski F, Pena A, Ferencik M, Chae CU, Cury RC, Butler J, Abbara S, Brown DF et al. Coronary multidetector computed tomography in the assessment of patients with acute chest pain. *Circulation*. 2006; 114(21):2251-2260.
 45. Gallagher MJ, Ross MA, Raff GL, Goldstein JA, O'Neill WW, O'Neil B. The diagnostic accuracy of 64-slice computed tomography coronary angiography compared with stress nuclear imaging in emergency department low-risk chest pain patients. *Annals of Emergency Medicine*. 2007;49(2):125-136.
 46. Goldstein JA, Gallagher MJ, O'Neill WW, Ross MA, O'Neil BJ, Raff GL. A randomized controlled trial of multi-slice coronary computed tomography for evaluation of acute chest pain. *Journal of the American College of Cardiology*. 2007;49(8):863-871.
 47. Coles DR, Wilde P, Oberhoff M, Rogers CA, Karsch KR, Baumbach A. Multislice computed tomography coronary angiography in patients admitted with a suspected acute coronary syndrome. *The International Journal of Cardiovascular Imaging*. 2007;23(5):603-614.
 48. Hoffmann U, Bamberg F, Chae CU, Nichols JH, Rogers IS, Seneviratne SK, Truong QA, Cury RC, Abbara S, Shapiro MD et al. Coronary computed tomography angiography for early triage of patients with acute chest pain: the ROMICAT (Rule Out Myocardial Infarction using Computer

- Assisted Tomography) trial. *Journal of the American College of Cardiology*. 2009;53(18):1642-1650.
49. Greenberg MA, Fish BG, Spindola-Franco H. Congenital anomalies of the coronary arteries. Classification and significance. *Radiologic Clinics of North America*. 1989;27(6):1127-1146.
 50. Ropers D, Moshage W, Daniel WG, Jessl J, Gottwik M, Achenbach S. Visualization of coronary artery anomalies and their anatomic course by contrast-enhanced electron beam tomography and three-dimensional reconstruction. *The American Journal of Cardiology*. 2001;87(2):193-197.
 51. Deibler AR, Kuzo RS, Vohringer M, Page EE, Safford RE, Patron JN, Lane GE, Morin RL, Gerber TC. Imaging of congenital coronary anomalies with multislice computed tomography. *Mayo Clinic Proceedings Mayo Clinic*. 2004;79(8):1017-1023.
 52. Datta J, White CS, Gilkeson RC, Meyer CA, Kansal S, Jani ML, Arildsen RC, Read K. Anomalous coronary arteries in adults: depiction at multi-detector row CT angiography. *Radiology*. 2005;235(3):812-818.
 53. Schmid M, Achenbach S, Ludwig J, Baum U, Anders K, Pohle K, Daniel WG, Ropers D. Visualization of coronary artery anomalies by contrast-enhanced multi-detector row spiral computed tomography. *International journal of cardiology*. 2006;111(3):430-435.
 54. Kim SY, Seo JB, Do KH, Heo JN, Lee JS, Song JW, Choe YH, Kim TH, Yong HS, Choi SI et al. Coronary artery anomalies: classification and ECG-gated multi-detector row CT findings with angiographic correlation. *Radiographics : A Review Publication of the Radiological Society of North America, Inc*. 2006;26(2):317-333; discussion 333-314.
 55. Duran C, Kantarci M, Durur Subasi I, Gulbaran M, Sevimli S, Bayram E, Eren S, Karaman A, Fil F, Okur A. Remarkable anatomic anomalies of coronary arteries and their clinical importance: a multidetector computed tomography angiographic study. *Journal of Computer Assisted Tomography*. 2006;30(6):939-948.
 56. Kini S, Bis KG, Weaver L. Normal and variant coronary arterial and venous anatomy on high-resolution CT angiography. *Ajr American Journal Of Roentgenology*. 2007;188(6):1665-1674.
 57. Greenland P, LaBree L, Azen SP, Doherty TM, Detrano RC. Coronary artery calcium score combined with Framingham score for risk prediction in asymptomatic individuals. *Jama : The Journal of the American Medical Association*. 2004;291(2):210-215.
 58. Arad Y, Goodman KJ, Roth M, Newstein D, Guerci AD. Coronary calcification, coronary disease risk factors, C-reactive protein, and atherosclerotic cardiovascular disease events: the St. Francis Heart Study. *Journal of the American College of Cardiology*. 2005;46(1):158-165.
 59. Sarwar A, Shaw LJ, Shapiro MD, Blankstein R, Hoffmann U, Cury RC, Abbata S, Brady TJ, Budoff MJ, Blumenthal RS et al. Diagnostic and prognostic value of absence of coronary artery calcification. *JACC Cardiovascular Imaging*. 2009;2(6):675-688.
 60. Ostrom MP, Gopal A, Ahmadi N, Nasir K, Yang E, Kakadiaris I, Flores F, Mao SS, Budoff MJ. Mortality incidence and the severity of coronary atherosclerosis assessed by computed tomography angiography. *Journal of the American College of Cardiology*. 2008;52(16):1335-1343.
 61. van Werkhoven JM, Gaemperli O, Schuijff JD, Jukema JW, Kroft LJ, Leschka S, Alkadhi H, Valenta I, Pundziute G, de Roos A et al. Multislice computed tomography coronary angiography for risk stratification in patients with an intermediate pretest likelihood. *Heart*. 2009;95(19):1607-1611.
 62. Chow BJ, Wells GA, Chen L, Yam Y, Galiwango P, Abraham A, Sheth T, Dennie C, Beanlands RS, Ruddy TD. Prognostic value of 64-slice cardiac computed tomography severity of coronary artery disease, coronary atherosclerosis, and left ventricular ejection fraction. *Journal of the American College of Cardiology*. 2010;55(10):1017-1028.
 63. Hamon M, Lepage O, Malagutti P, Riddell JW, Morello R, Agostini D, Hamon M. Diagnostic performance of 16- and 64-section spiral CT for coronary artery bypass graft assessment: meta-analysis. *Radiology*. 2008;247(3):679-686.
 64. Malagutti P, Nieman K, Meijboom WB, van Mieghem CA, Pugliese F, Cademartiri F, Mollet NR, Boersma E, de Jaegere PP, de Feyter PJ. Use of 64-slice CT in symptomatic patients after coronary bypass surgery: evaluation of grafts and

- coronary arteries. *European Heart Journal*. 2007;28(15):1879-1885.
65. Pache G, Saueressig U, Frydrychowicz A, Foell D, Ghanem N, Kotter E, Geibel-Zehender A, Bode C, Langer M, Bley T. Initial experience with 64-slice cardiac CT: non-invasive visualization of coronary artery bypass grafts. *European Heart Journal*. 2006;27(8):976-980.
 66. Dijkers R, Willems TP, Tio RA, Anthonio RL, Zijlstra F, Oudkerk M. The benefit of 64-MDCT prior to invasive coronary angiography in symptomatic post-CABG patients. *The International Journal Of Cardiovascular Imaging*. 2007;23(3):369-377.
 67. Ropers D, Pohle FK, Kuettner A, Pflederer T, Anders K, Daniel WG, Bautz W, Baum U, Achenbach S. Diagnostic accuracy of noninvasive coronary angiography in patients after bypass surgery using 64-slice spiral computed tomography with 330-ms gantry rotation. *Circulation*. 2006;114(22):2334-2341; quiz 2334.
 68. Meyer TS, Martinoff S, Hadamitzky M, Will A, Kastrati A, Schomig A, Hausleiter J. Improved noninvasive assessment of coronary artery bypass grafts with 64-slice computed tomographic angiography in an unselected patient population. *Journal of the American College of Cardiology*. 2007;49(9):946-950.
 69. Jabara R, Chronos N, Klein L, Eisenberg S, Allen R, Bradford S, Frohwein S. Comparison of multidetector 64-slice computed tomographic angiography to coronary angiography to assess the patency of coronary artery bypass grafts. *The American Journal of Cardiology*. 2007;99(11):1529-1534.
 70. Feuchtner GM, Schachner T, Bonatti J, Friedrich GJ, Soegner P, Klauser A, zur Nedden D. Diagnostic performance of 64-slice computed tomography in evaluation of coronary artery bypass grafts. *AJR American Journal of Roentgenology*. 2007;189(3):574-580.
 71. Nazeri I, Shahabi P, Tehrai M, Sharif-Kashani B, Nazeri A. Assessment of patients after coronary artery bypass grafting using 64-slice computed tomography. *The American Journal of Cardiology*. 2009;103(5):667-673.
 72. Maintz D, Juergens KU, Wichter T, Grude M, Heindel W, Fischbach R. Imaging of coronary artery stents using multislice computed tomography: in vitro evaluation. *European Radiology*. 2003;13(4):830-835.
 73. Kumbhani DJ, Ingelmo CP, Schoenhagen P, Curtin RJ, Flamm SD, Desai MY. Meta-analysis of diagnostic efficacy of 64-slice computed tomography in the evaluation of coronary in-stent restenosis. *The American Journal of Cardiology*. 2009;103(12):1675-1681.
 74. Sun Z, Davidson R, Lin CH. Multi-detector row CT angiography in the assessment of coronary in-stent restenosis: a systematic review. *European Journal of Radiology*. 2009;69(3):489-495.
 75. Schlosser T, Scheuermann T, Ulzheimer S, Mohrs OK, Kuhling M, Albrecht PE, Voigtlander T, Barkhausen J, Schmermund A. In vitro evaluation of coronary stents and in-stent stenosis using a dynamic cardiac phantom and a 64-detector row CT scanner. *Clinical Research in Cardiology : official Journal of the German Cardiac Society*. 2007;96(12):883-890.
 76. Annuar BR, Liew CK, Chin SP, Ong TK, Seyfarth MT, Chan WL, Fong YY, Ang CK, Lin N, Liew HB et al. Assessment of global and regional left ventricular function using 64-slice multislice computed tomography and 2D echocardiography: a comparison with cardiac magnetic resonance. *European Journal of Radiology*. 2008;65(1):112-119.
 77. Halliburton SS, Petersilka M, Schwartzman PR, Obuchowski N, White RD. Evaluation of left ventricular dysfunction using multiphasic reconstructions of coronary multi-slice computed tomography data in patients with chronic ischemic heart disease: validation against cine magnetic resonance imaging. *The International Journal of Cardiovascular Imaging*. 2003;19(1):73-83.
 78. Schmermund A, Rensing BJ, Sheedy PF, Rumberger JA. Reproducibility of right and left ventricular volume measurements by electron-beam CT in patients with congestive heart failure. *International Journal of Cardiac Imaging*. 1998;14(3):201-209.
 79. Lang RM, Bierig M, Devereux RB, Flachskampf FA, Foster E, Pellikka PA, Picard MH, Roman MJ, Seward J, Shanewise JS et al. Recommendations for chamber quantification: a report from the American Society of Echocardiography's Guidelines and Standards Committee and the Chamber Quantification Writing Group,

- developed in conjunction with the European Association of Echocardiography, a branch of the European Society of Cardiology. *Journal of the American Society of Echocardiography* : official publication of the American Society of Echocardiography. 2005;18(12):1440-1463.
80. Rumberger JA, Behrenbeck T, Breen JR, Reed JE, Gersh BJ. Nonparallel changes in global left ventricular chamber volume and muscle mass during the first year after transmural myocardial infarction in humans. *Journal of the American College of Cardiology*. 1993;21(3):673-682.
 81. Hirose K, Reed JE, Rumberger JA. Serial changes in left and right ventricular systolic and diastolic dynamics during the first year after an index left ventricular Q wave myocardial infarction. *Journal of the American College of Cardiology*. 1995;25(5):1097-1104.
 82. Richardson P, McKenna W, Bristow M, Maisch B, Mautner B, O'Connell J, Olsen E, Thiene G, Goodwin J, Gyarfás I et al. Report of the 1995 World Health Organization/International Society and Federation of Cardiology Task Force on the Definition and Classification of cardiomyopathies. *Circulation*. 1996;93(5):841-842.
 83. Spodick DH: Pericardial disease. *Jama* : the journal of the American Medical Association. 1997;278(9):704.
 84. Oyama N, Oyama N, Komuro K, Nambu T, Manning WJ, Miyasaka K. Computed tomography and magnetic resonance imaging of the pericardium: anatomy and pathology. *Magnetic resonance in medical sciences : MRMS : an official journal of Japan Society of Magnetic Resonance in Medicine*. 2004;3(3):145-152.
 85. Cook SC, Raman SV. Multidetector computed tomography in the adolescent and young adult with congenital heart disease. *Journal of Cardiovascular Computed Tomography*. 2008;2(1):36-49.
 86. Raman SV, Cook SC, McCarthy B, Ferketich AK. Usefulness of multidetector row computed tomography to quantify right ventricular size and function in adults with either tetralogy of Fallot or transposition of the great arteries. *The American Journal of Cardiology*. 2005;95(5):683-686.
 87. Hoffmann A, Engelfriet P, Mulder B. Radiation exposure during follow-up of adults with congenital heart disease. *International Journal of Cardiology*. 2007;118(2):151-153.
 88. Meijboom WB, Mollet NR, Van Mieghem CA, Kluin J, Weustink AC, Pugliese F, Vourvouri E, Cademartiri F, Bogers AJ, Krestin GP et al. Pre-operative computed tomography coronary angiography to detect significant coronary artery disease in patients referred for cardiac valve surgery. *Journal of the American College of Cardiology*. 2006;48(8):1658-1665.
 89. Reant P, Brunot S, Lafitte S, Serri K, Leroux L, Corneloup O, Iriart X, Coste P, Dos Santos P, Roudaut R et al. Predictive value of noninvasive coronary angiography with multidetector computed tomography to detect significant coronary stenosis before valve surgery. *The American Journal of Cardiology* . 2006;97(10):1506-1510.
 90. Russo V, Gostoli V, Lovato L, Montalti M, Marzocchi A, Gavelli G, Branzi A, Di Bartolomeo R, Fattori R. Clinical value of multidetector CT coronary angiography as a preoperative screening test before non-coronary cardiac surgery. *Heart*. 2007;93(12):1591-1598.
 91. Allman KC, Shaw LJ, Hachamovitch R, Udelson JE. Myocardial viability testing and impact of revascularization on prognosis in patients with coronary artery disease and left ventricular dysfunction: a meta-analysis. *Journal of the American College of Cardiology*. 2002;39(7):1151-1158.
 92. Slart RH, Bax JJ, van Veldhuisen DJ, van der Wall EE, Dierckx RA, de Boer J, Jager PL. Prediction of functional recovery after revascularization in patients with coronary artery disease and left ventricular dysfunction by gated FDG-PET. *Journal of nuclear cardiology : official publication of the American Society of Nuclear Cardiology*. 2006;13(2):210-219.
 93. Kim RJ, Wu E, Rafael A, Chen EL, Parker MA, Simonetti O, Klocke FJ, Bonow RO, Judd RM. The use of contrast-enhanced magnetic resonance imaging to identify reversible myocardial dysfunction. *The New England Journal of Medicine*. 2000;343(20):1445-1453.
 94. Lardo AC, Cordeiro MA, Silva C, Amado LC, George RT, Saliaris AP, Schuleri KH, Fernandes VR, Zviman M, Nazarian S et al. Contrast-enhanced multidetector computed tomography viability imaging after myocardial infarction: characterization

- of myocyte death, microvascular obstruction, and chronic scar. *Circulation*. 2006;113(3):394-404.
95. Gerber BL, Belge B, Legros GJ, Lim P, Poncelet A, Pasquet A, Gisellu G, Coche E, Vanoverschelde JL. Characterization of acute and chronic myocardial infarcts by multidetector computed tomography: comparison with contrast-enhanced magnetic resonance. *Circulation*. 2006;113(6):823-833.
 96. Chang HJ, George RT, Schuleri KH, Evers K, Kitagawa K, Lima JA, Lardo AC. Prospective electrocardiogram-gated delayed enhanced multidetector computed tomography accurately quantifies infarct size and reduces radiation exposure. *JACC Cardiovascular Imaging*. 2009;2(4):412-420.
 97. Wu KC, Lima JA. Noninvasive imaging of myocardial viability: current techniques and future developments. *Circulation Research*. 2003;93(12):1146-1158.
 98. George RT, Jerosch-Herold M, Silva C, Kitagawa K, Bluemke DA, Lima JA, Lardo AC. Quantification of myocardial perfusion using dynamic 64-detector computed tomography. *Investigative Radiology*. 2007;42(12):815-822.
 99. Shinbane JS. Cardiovascular computed tomographic angiography in patients with atrial fibrillation: challenges of anatomy, physiology, and electrophysiology. *Journal of Cardiovascular Computed Tomography*. 2008;2(3):181-182.
 100. Garcia MJ. Detection of left atrial appendage thrombus by cardiac computed tomography: a word of caution. *JACC Cardiovascular Imaging*. 2009;2(1):77-79.
 101. Giesler T, Baum U, Ropers D, Ulzheimer S, Wenkel E, Mennicke M, Bautz W, Kalender WA, Daniel WG, Achenbach S. Noninvasive visualization of coronary arteries using contrast-enhanced multidetector CT: influence of heart rate on image quality and stenosis detection. *AJR American Journal of Roentgenology*. 2002;179(4):911-916.
 102. Schroeder S, Kopp AF, Kuettner A, Burgstahler C, Herdeg C, Heuschmid M, Baumbach A, Claussen CD, Karsch KR, Seipel L. Influence of heart rate on vessel visibility in noninvasive coronary angiography using new multislice computed tomography: experience in 94 patients. *Clinical Imaging*. 2002;26(2):106-111.
 103. Raff GL, Gallagher MJ, O'Neill WW, Goldstein JA: Diagnostic accuracy of noninvasive coronary angiography using 64-slice spiral computed tomography. *Journal of the American College of Cardiology*. 2005;46(3):552-557.
 104. Sun Z, Lin C, Davidson R, Dong C, Liao Y. Diagnostic value of 64-slice CT angiography in coronary artery disease: a systematic review. *European Journal of Radiology*. 2008; 67(1):78-84.
 105. Abdulla J, Abildstrom SZ, Gotzsche O, Christensen E, Kober L, Torp-Pedersen C. 64-multislice detector computed tomography coronary angiography as potential alternative to conventional coronary angiography: a systematic review and meta-analysis. *European Heart Journal*. 2007;28(24):3042-3050.
 106. Mowatt G, Cook JA, Hillis GS, Walker S, Fraser C, Jia X, Waugh N. 64-Slice computed tomography angiography in the diagnosis and assessment of coronary artery disease: systematic review and meta-analysis. *Heart*. 2008;94(11):1386-1393.

© 2015 Shehri et al.; This is an Open Access article distributed under the terms of the Creative Commons Attribution License (<http://creativecommons.org/licenses/by/4.0>), which permits unrestricted use, distribution, and reproduction in any medium, provided the original work is properly cited.

Peer-review history:

The peer review history for this paper can be accessed here:

<http://www.sciencedomain.org/review-history.php?iid=841&id=26&aid=6904>